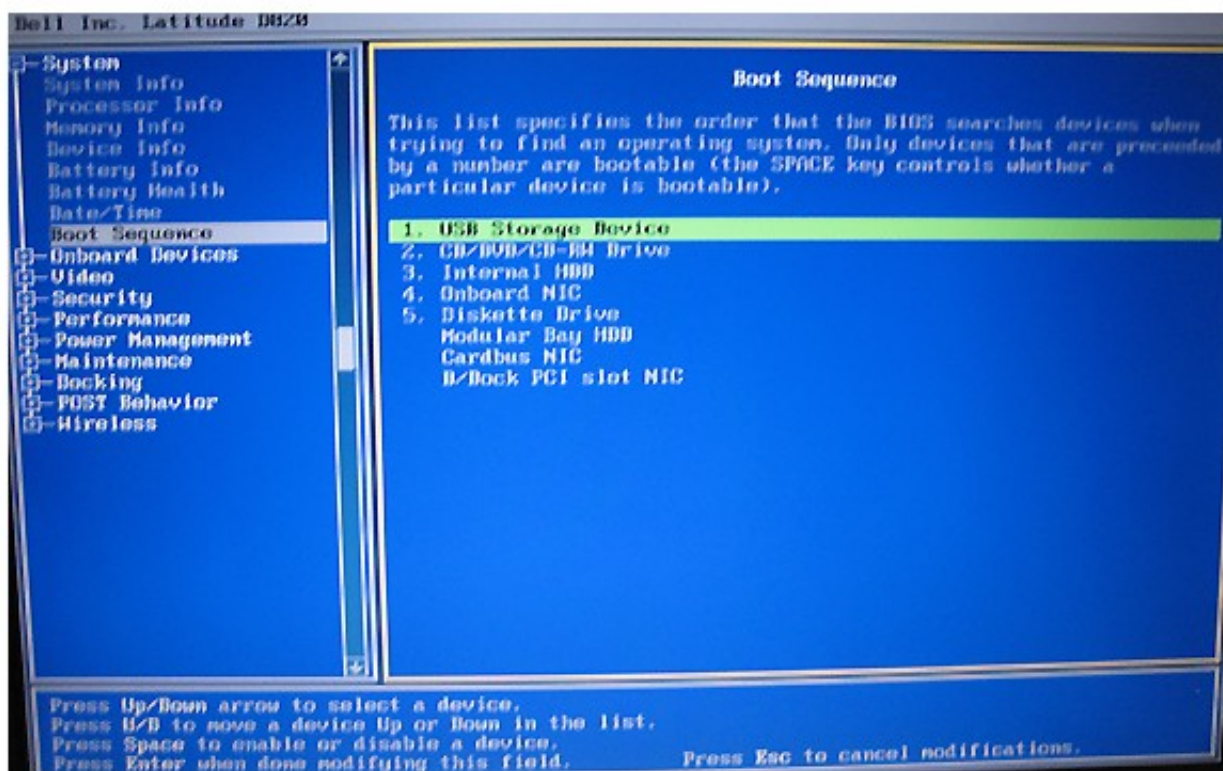


# Bios Configuration

## for Mandriva FLASH

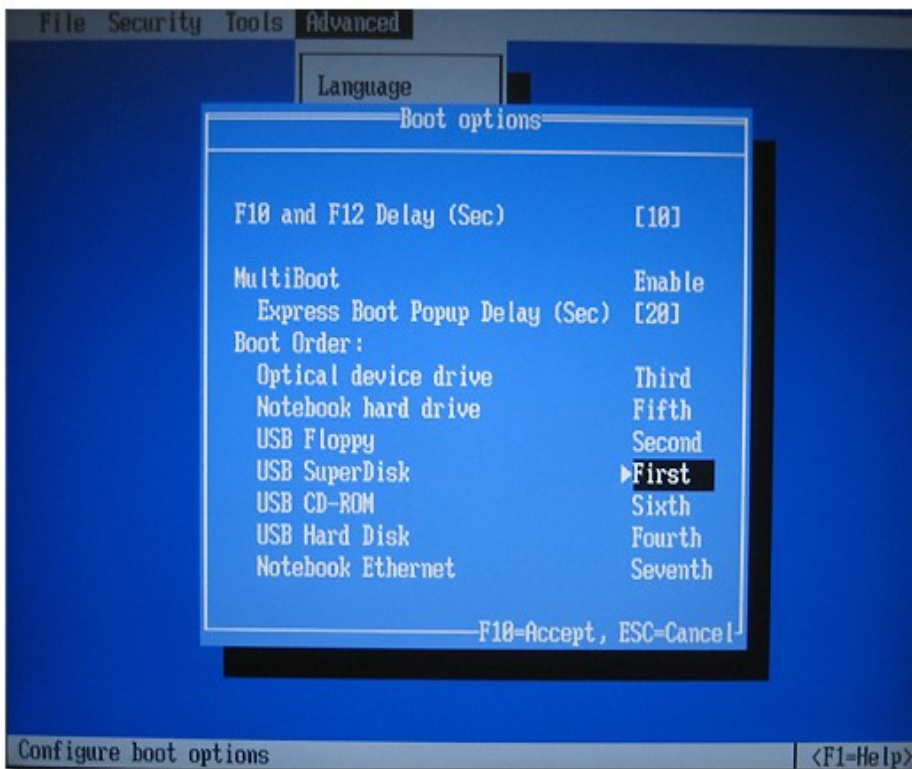
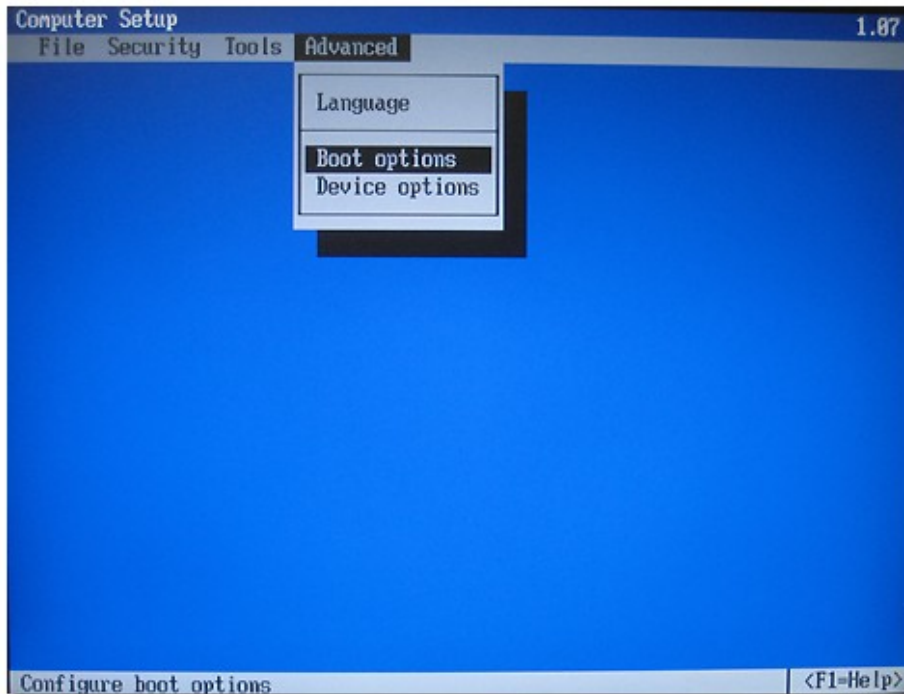


Configuration available for all Dell bios A0x. (Laptop, desktop & workstation):



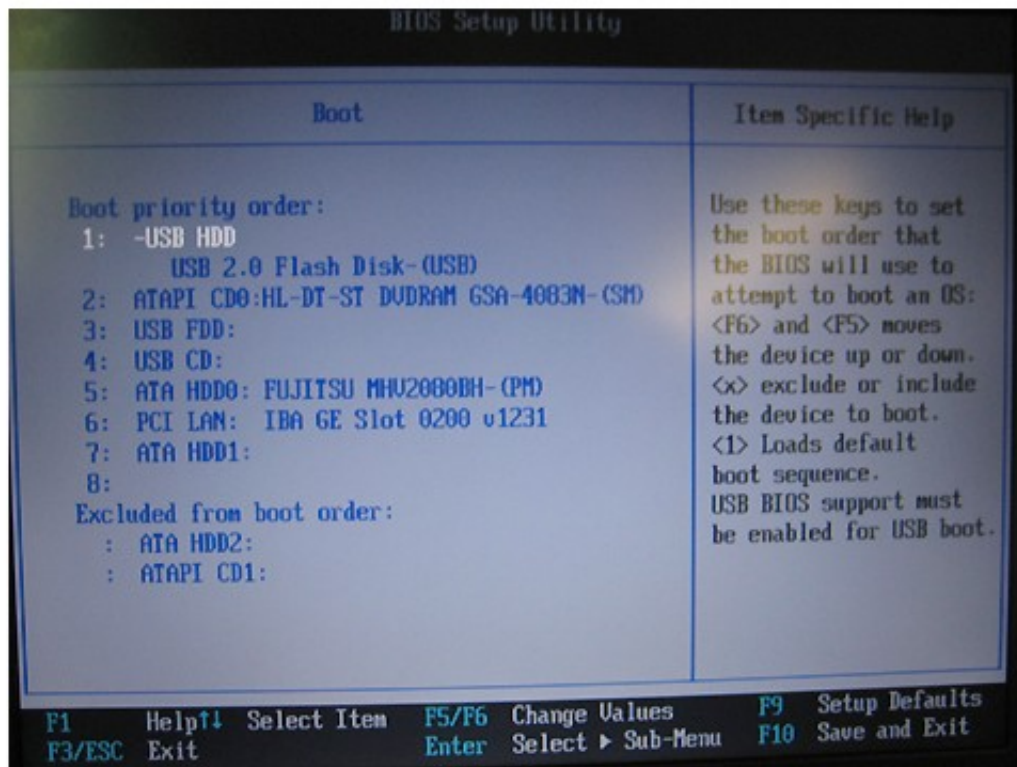
- Hit <F2> key for run bios setup
- Select <System> field to show the list and press <Enter> on <Boot Sequence> for modify this setting.
- Move « USB Storage Device » in first position of the list with <U> key.

Configuration available for all HP latest bios version (Laptop):



- Hit <F10> key for run bios setup
- Select <Advanced> and choose <Boot options>
- Set <USB Hard Drive> in first with left / right arrow.

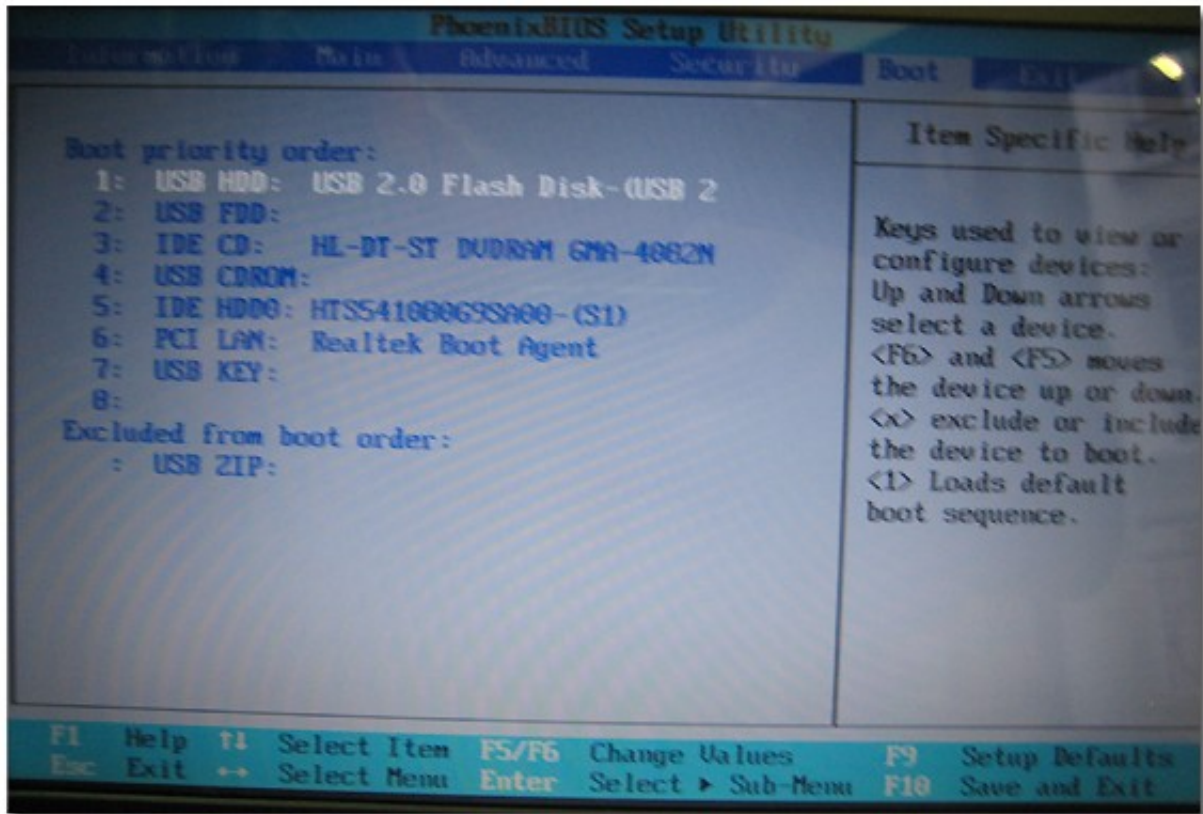
Configuration available for Lenovo Thinkpad Series (laptop):



- Press the blue IBM/Thinkvantage key while the system starts to enter in BIOS configuration screen.
- Select <Startup> menu and choose <Boot> option.
- Set USB HDD in first. Usually you can change boot position with <F5 - F6> function keys.
- Hit <F10> to save and exit

## Phoenix Bios

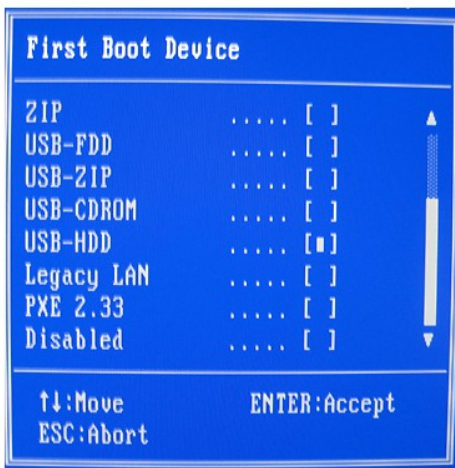
Configuration available for Lenovo, Acer, Asus & Samsung (laptop):



- Press <F1> to access in bios setup utility.
- Go to the boot menu with left arrow.
- Select USB HDD with down arrow and hit <F6> to put it in first position
- Hit <F10> to save and exit

## AMI Bios

Configuration available for MSI, HP, Gigabyte motherboards:



- Usually you can access to bios setup utility with <del> or <F2> key.
- First step, select <Advanced Bios> field in first menu, and choose <Boot Sequency>.
- Move on USB-HDD for First Boot Device configuration.
- Save and exit

*Please read carefully those notes and apply them in order to succeed in using the Mandriva Flash*

*Thanks for your comprehension.*